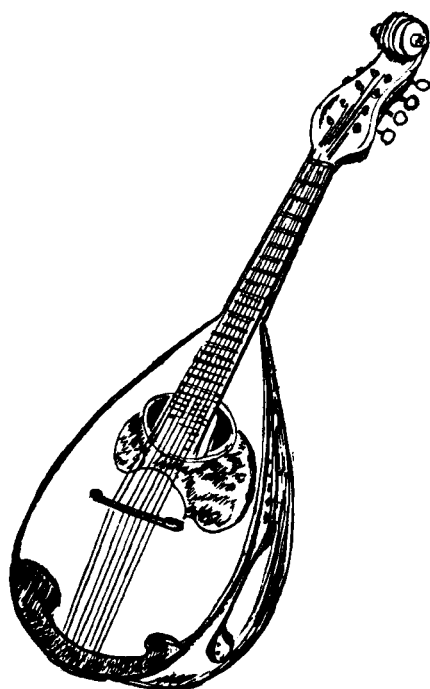


# Raffaele Calace

Op. 148 13<sup>o</sup> Preludio

(Liuto solo)



Edizioni Calace

14802-00

[www.calace.it](http://www.calace.it) - [racalace@tin.it](mailto:racalace@tin.it) - +39(0)81 5515983

XIII Preludio (Militare)

per LIUTO SOLO

Raffaele Calace  
Op.148

Liuto solo  
*Largo*

*f* VII posizione ----- J

*pp*

*p* *mf*

*f* VII posizione ----- *mp*

*f* VII Posi-

-zione ----- *mf*

*ff* *mf* VII posizione -----

*un poco meno*

*a tempo*

First musical staff with treble and bass clefs. Dynamics: *P* (piano) and *pp* (pianissimo).

Second musical staff with treble and bass clefs. Dynamics: *f* (forte).

Third musical staff with treble and bass clefs. Dynamics: *rall.* (rallentando), *a tempo*, and *pp*.

Fourth musical staff with treble and bass clefs.

Fifth musical staff with treble and bass clefs. Dynamics: *pp* and *ff* (fortissimo).

Sixth musical staff with treble and bass clefs. Dynamics: *pp*.

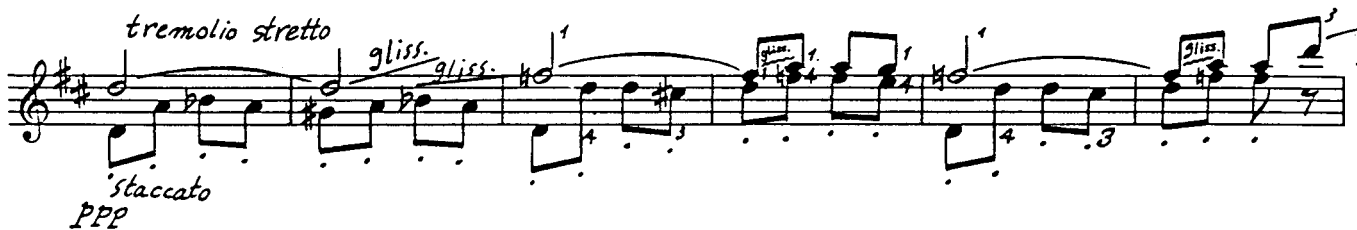
Seventh musical staff with treble and bass clefs. Dynamics: *mf* (mezzo-forte).

Eighth musical staff with treble and bass clefs.

Ninth musical staff with treble and bass clefs.



rall. ----- Lento Adagio  $\text{♩} = 100$  in quattro



rall. senza tempo

Lento

Leggero



A musical staff in treble clef with a key signature of two sharps (F# and C#). The music features complex rhythmic patterns with many beamed notes. Fingerings are indicated by numbers 1-4. There are also some slurs and accents.

A musical staff in treble clef with a key signature of two sharps. It begins with a *vall.* marking and a slur over a few notes. Below the staff, there is a *gliss.* marking. The tempo changes to *Tempo I°*. The music consists of a series of eighth notes. A *pp* dynamic marking is present below the staff.

A musical staff in treble clef with a key signature of two sharps, continuing the eighth-note rhythmic pattern from the previous staff.

A musical staff in treble clef with a key signature of two sharps, continuing the eighth-note rhythmic pattern. A *mf* dynamic marking is present below the staff.

A musical staff in treble clef with a key signature of two sharps, continuing the eighth-note rhythmic pattern. It features a slur over the final few notes.

A musical staff in treble clef with a key signature of two sharps, continuing the eighth-note rhythmic pattern. It features a slur over the final few notes.

A musical staff in treble clef with a key signature of two sharps, continuing the eighth-note rhythmic pattern. It features a slur over the final few notes.



*rall. a tempo*



*affrett.*



*affrett.*



*ppp*

*ff*

Napoli-June, 1927